

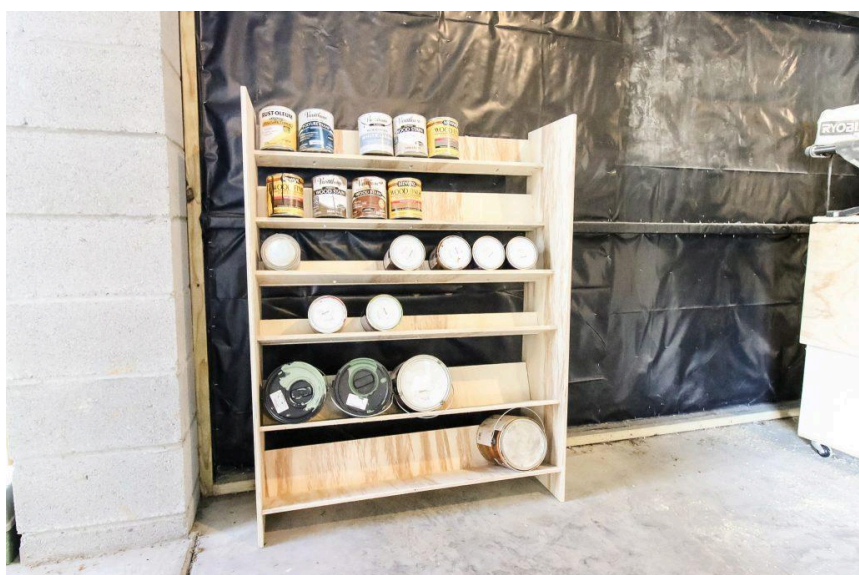
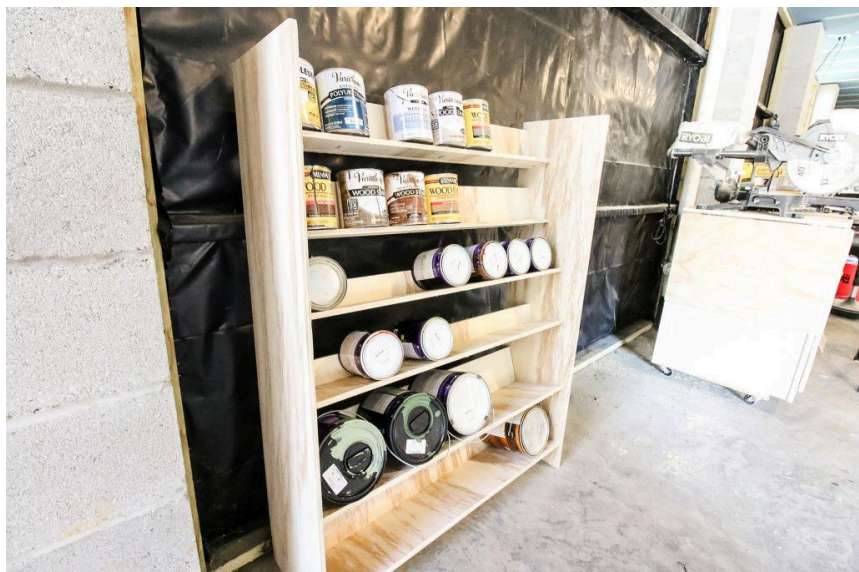
Paint and Stain Storage Shelf

By **Charleston Crafted**

Difficulty

Easy

This project has you covered for a way to store paint and stain in an organized way. This easy DIY garage paint storage system will display your paints and stains and keep you organized!



Tools

Kreg Tools



[Adaptive Cutting System Saw + Guide Track Kit](#)



[Kreg® Pocket-Hole Jig 720](#)



[Mobile Project Center](#)

Other Tools

Circular Saw (cordless)

Table Saw

Drill (cordless)

Sander

Materials

Wood Products

1 Plywood , 1/2" Thick , Full Sheet

Hardware & Supplies

42 1" Kreg Pocket Screws

Cut List & Parts

- 2 Sides , 1/2"x48"x11"
- 2 Top Backs , 1/2"x36"x5"
- 2 Top Fronts , 1/2"x36"x3"
- 2 Middle Backs , 1/2"x36"x3"
- 2 Middle Fronts , 1/2"x36"x5"
- 2 Bottom Backs , 1/2"x36"x8"
- 2 Bottom Fronts , 1/2"x36"x6"

Directions

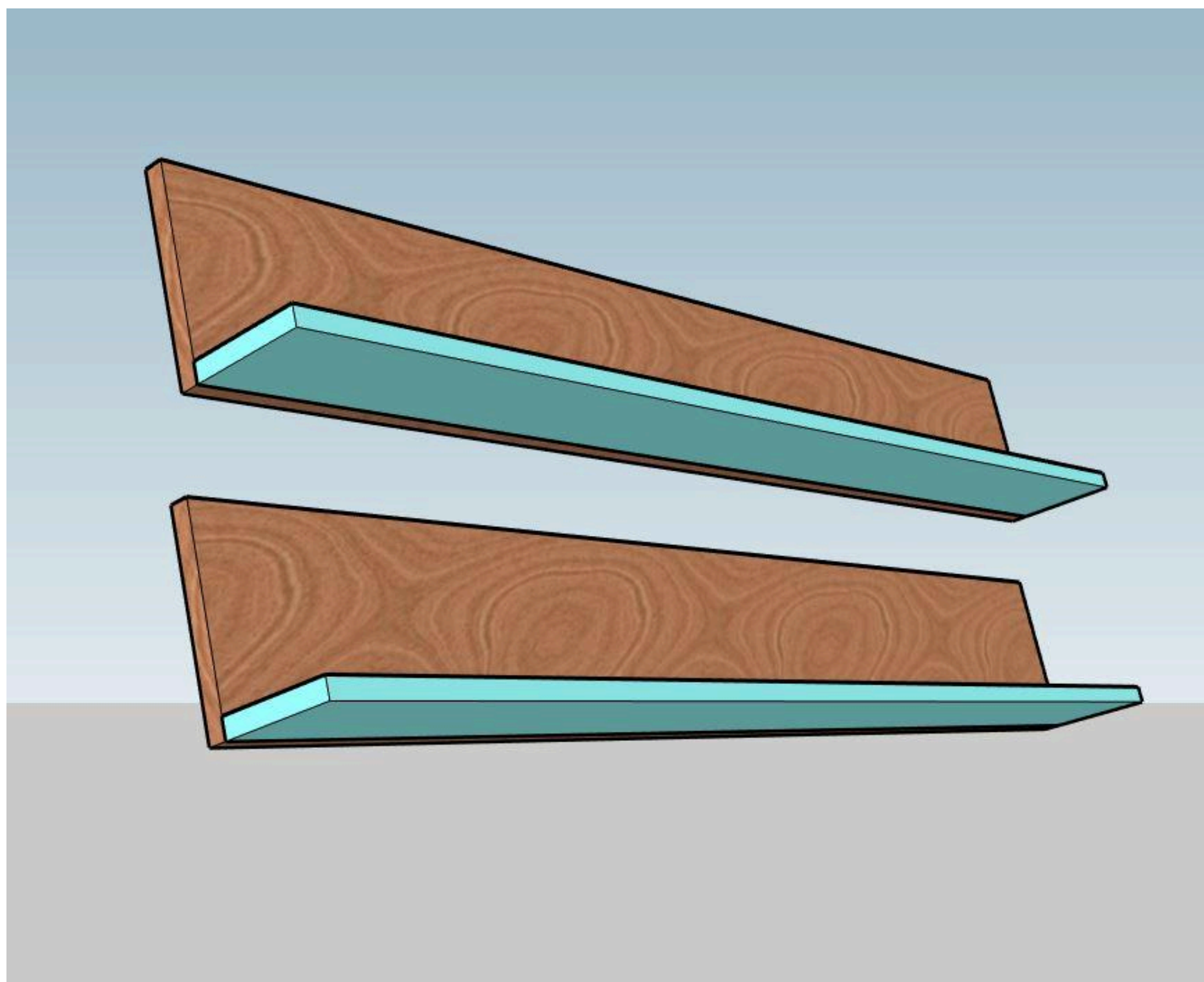
1

Build Top Shelves

Attach a Top Front board to a Top Back board using pocket screws in the three pocket holes you drilled.

Repeat for the second top shelf.

These shelves are designed for stain cans so you can see the front of the can.



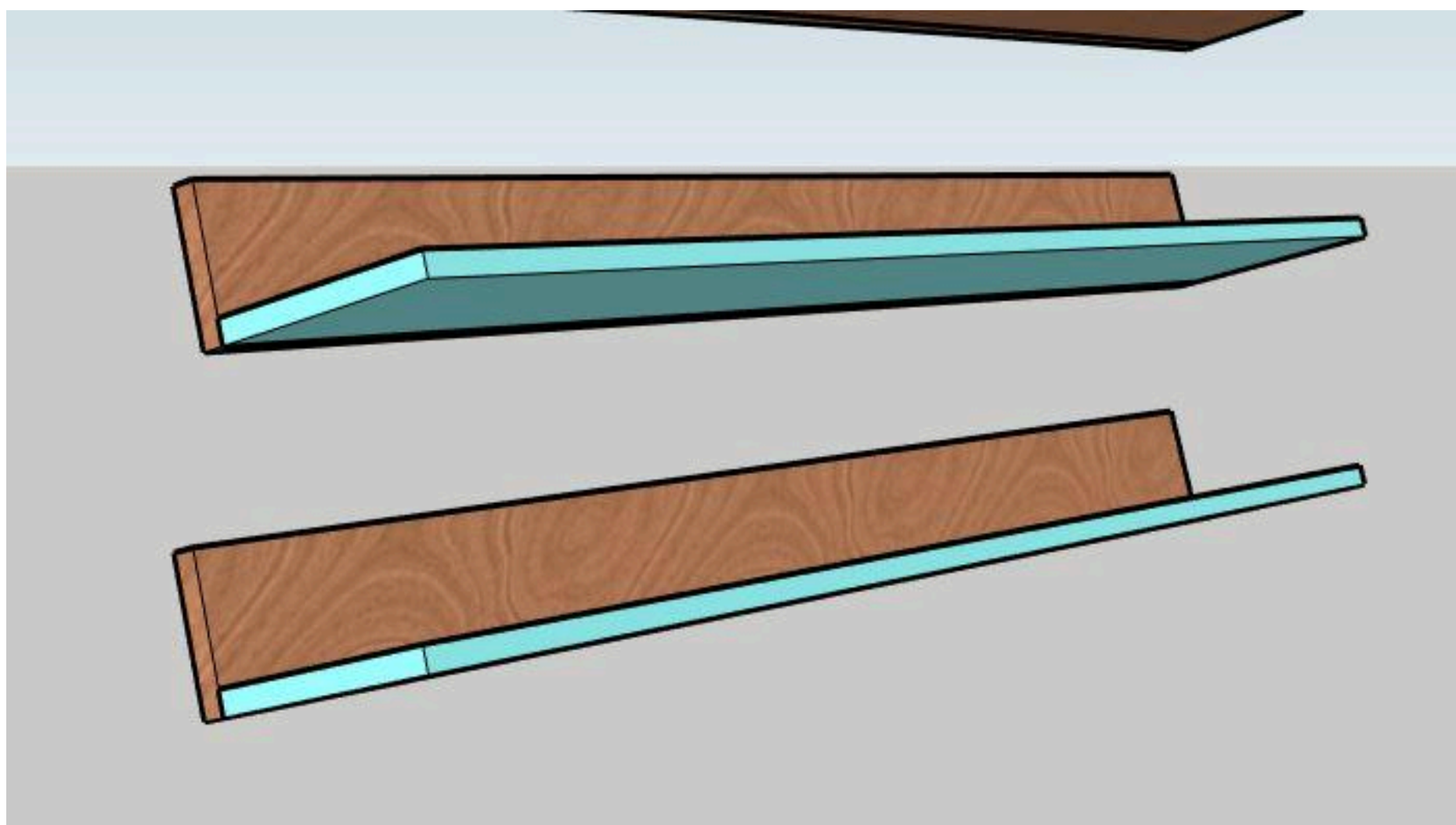
2

Build Middle Shelves

Attach a Middle Front board to a Middle Back board using pocket screws in the three pocket holes you drilled.

Repeat for the second middle shelf.

These shelves are designed for quart sized paint cans so you can see the name of the paint on the top of the can.

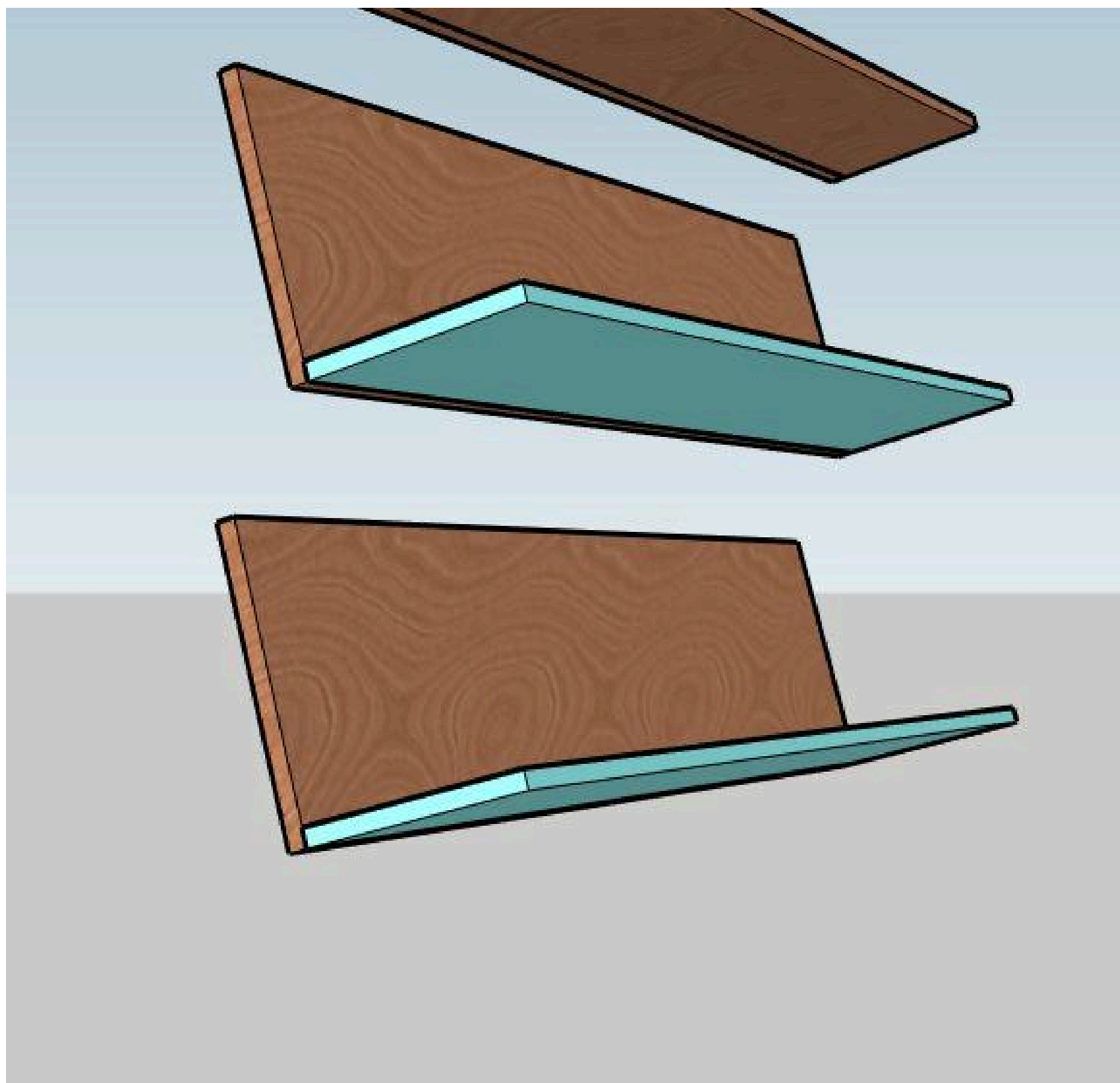


3**Build Bottom Shelves**

Attach a Bottom Front board to a Bottom Back board using pocket screws in the three pocket holes you drilled.

Repeat for the second bottom shelf.

These shelves are designed for gallon sized paint cans so you can see the name of the paint on the top of the can.



4

Attach Side One

Lay one of the Sides down and lay out each of the shelves on the board.

Arrange with spacing and tilt how you like, but ours were done as follows for the height of the front lip of each shelf.

Each shelf was angled about 15 degrees back.

Top Shelf 1- 43" from bottom of Side

Top Shelf 2- 35" from bottom of Side

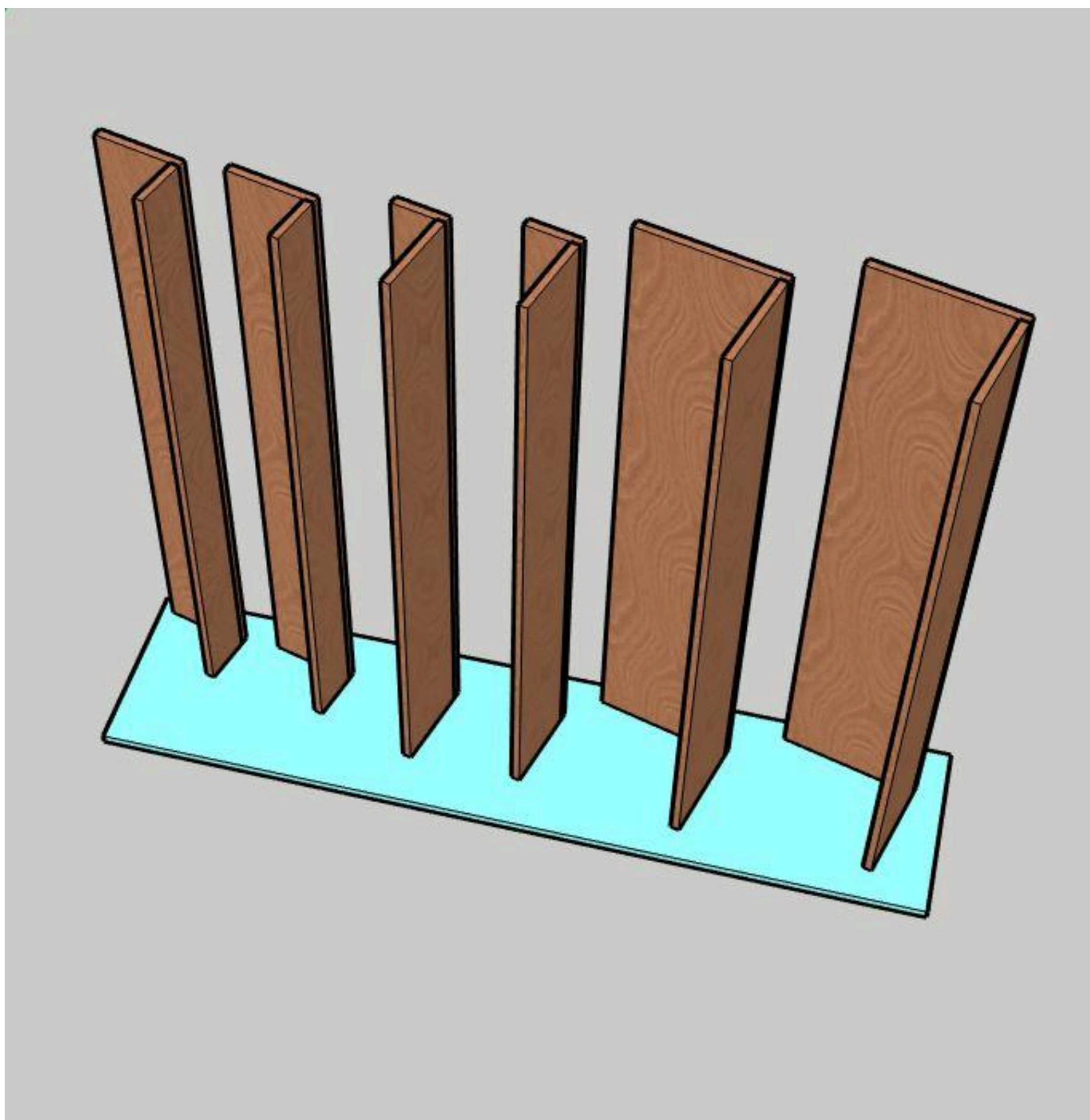
Middle Shelf 1- 29" from bottom of Side

Middle Shelf 2- 22" from bottom of Side

Bottom Shelf 1- 13" from bottom of Side

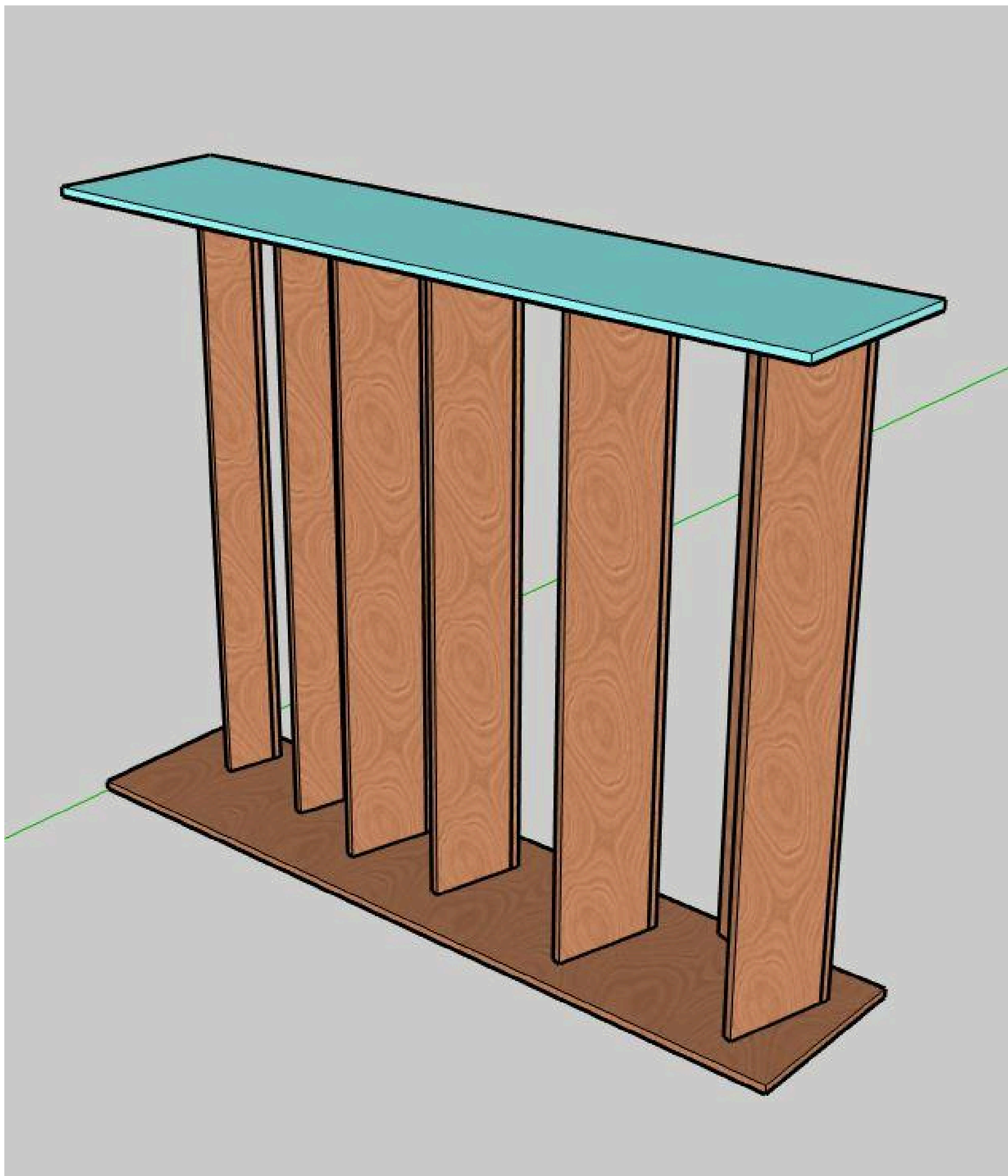
Bottom Shelf 2- 4" from bottom of Side

Attach with two pocket holes drilled on one side of each shelf.



5**Attach Side Two**

Line up the second Side with the same distances as Side one and attach with pocket holes on the other side of the shelves.



6**Stain or Paint**

Bust out one of the stains or paints you're about to store on this project and color it as you'd like. Or leave natural.



7

Enjoy

Enjoy your handiwork and tag @CharlestonCrafted on Instagram with a picture!

